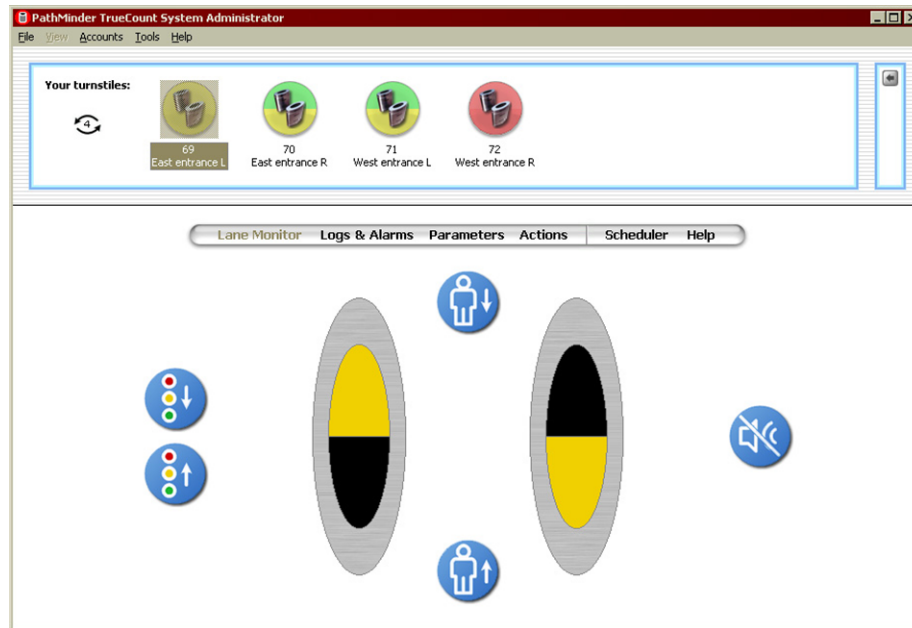


# PathMinder control software capabilities



- i **Monitor turnstiles locally & remotely.** Monitor all your turnstiles at once; each lane is visible at the top of the screen at all times. Each turnstile icon shows its state by its colour--a lane in card access in/free passage out has a yellow and green icon. Alarms flash red to grab attention. Watch your turnstiles from anywhere in the building--guard desk or security office--as if you were there.
- ii **Control alarms.** All alarms are visible simultaneously and can be cleared independently. Each alarm can last forever (until cleared by a person) or can reset itself after a given amount of time. Alarms can be finely tuned for length of audible or visible alarm, alarm tone, the speed at which the lights flash. Every alarm is logged; alarms can be filtered (by time and type) and reviewed periodically or in real-time.
- iii **Program turnstiles.** Change turnstile parameters while maintaining consistency among lanes; keep a backup of settings and maintain a log of changes automatically. Update turnstile firmware to take advantage of new features.
- iv **Analyze traffic.** Keep an eye on your current traffic rate in and out of the site. Maintain a count of the number of people currently in the building. Determine traffic trends from a histogram of incoming and outgoing people. Discover trends in alarms. Optionally use third-party reporting tools to dig through data.
- v **Welcome visitors.** Allow individual visitors to enter your secure area without an access card and without generating (false) alarms. Count and log visitors as they enter your site. Eliminate bulky guard shunt switches on the security desk.
- vi **Control & calm traffic.** Change lane state (open/card access/closed) on-the-fly or on a schedule. Have free egress during the day and require people to card out at night. Close some entrances after-hours. In peak periods, set some lanes for entry only and others for exit only to smooth traffic flow.

## System requirements

64 MB memory (RAM)

500+ MB free hard disk space for logs; fast hard disk (10 000 RPM U320 SCSI or SATA) recommended for optimal performance

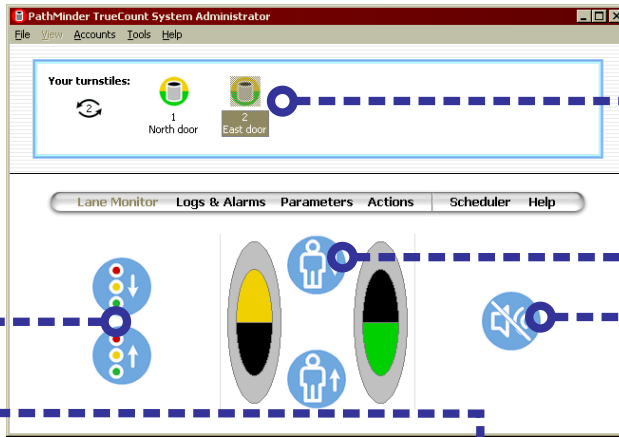
Windows 2000 Professional recommended  
Runs on Windows 95, 98, ME, 2000, and XP

One RS-232 serial port for each lane  
(i.e., seven serial ports to monitor seven lanes simultaneously)

USB-to-serial adapters connected to a powered USB hub are recommended

Works well with a touch screen or a tablet PC

# PathMinder control software tour



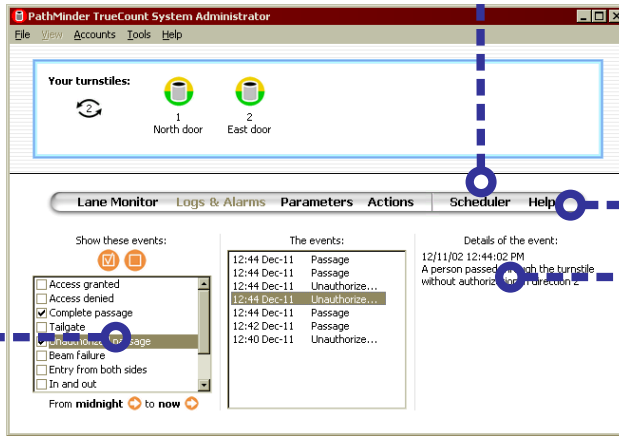
Monitor multiple lanes at all times

Admit guests

Clear alarms

Change each turnstile's inbound and outbound state (free passage/card access/lane closed) on-the-fly...

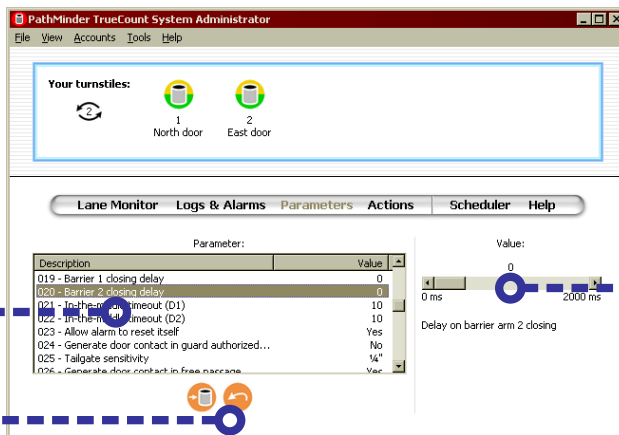
...or on a schedule



Refer to detailed, useful help; it is always nearby

Review detailed, plain-english logs

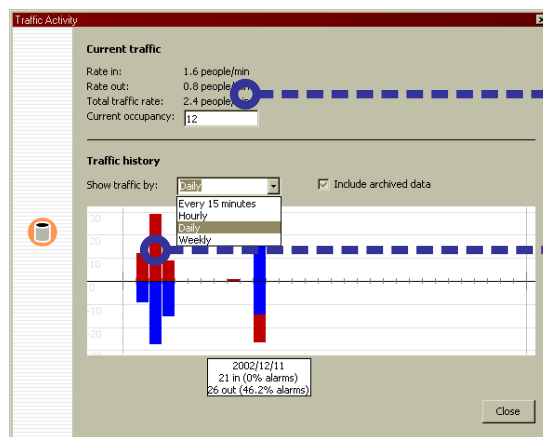
View any or all types of events, filtered by date/time



Enjoy an interface designed with accessibility in mind

Customize turnstiles' indicators, tolerance, ACS timings & more

Experiment with your turnstiles; you can always restore them later



View current traffic statistics (rate in, rate out, occupancy count)

See traffic and alarm trends at a glance