

# Competitive upgrades for units that don't compete.

Eliminate maintenance calls for "realignment". Reduce false alarms. And say goodbye to lineups.

Sick of high maintenance requirements, shoddy security, and constant false alarms from your current optical turnstiles? Consider upgrading to a PathMinder turnstile.

PathMinder now offers a competitive upgrade program. Get the best optical turnstile technology going, in a package that can drop into your existing site with minimal effort. It even works with your current access control system and card readers.

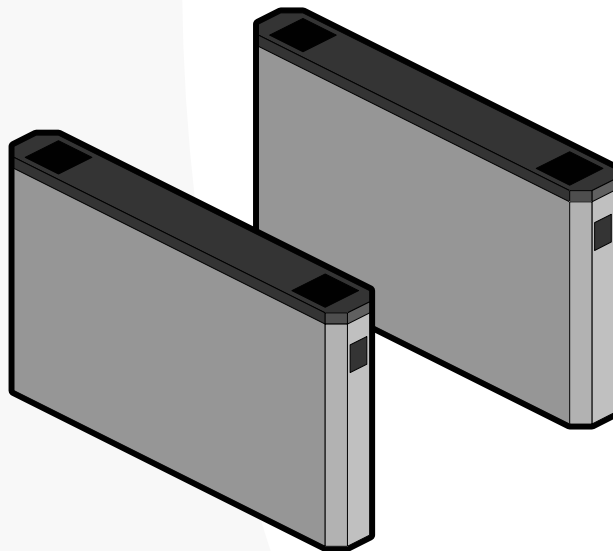
Here's how it works: order some turnstiles from us. We'll ship them to you in a jiffy.

Then send us your existing units for recycling, and we'll cut you a juicy rebate cheque.

Your discount isn't the only money you'll save: our turnstiles require almost no periodic maintenance. Our LED lights never burn out. Our beams never need to be aligned.

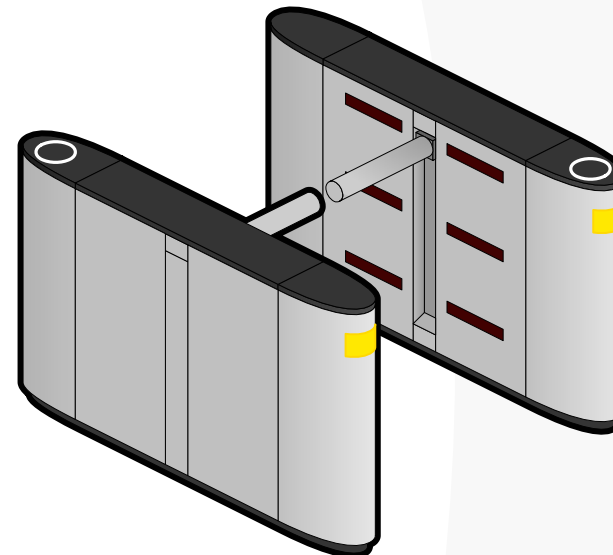
Staff will be happier, with fewer false alarms and no lineups.

PathMinder competitive upgrades. Finally, real speed, real security.



### Typical competitor's five-year old optical turnstile

- Two to six detection beams that use reflectors
- Beams can be fooled by a flashlight or direct sunlight
- Detection beams must be carefully aligned (and realigned, and realigned, and...)
- 6" to 8" tailgate detection
- High false alarm rate; real alarms are dismissed as false ("Boy Who Cried Wolf" effect)
- No effort to defend against attempts to crawl/roll through the lane
- Uses cooling fans that can fail over time, causing electronics to overheat
- Two end lights per lane
- Wood & Formica construction
- No barrier
- Approximately 60" x 40" x 8"



### New PathMinder optical turnstile

- 96 detection beams in a matrix; uses separate transmitters and receivers (not reflectors)
- Beams work perfectly even when flooded with natural or artificial light
- Detection beams work perfectly even under severe misalignment, reducing service needs
- Real ¼" tailgate detection for higher security
- Negligible false alarm rate
- Beams at different heights defend against attempts to crawl/roll through the lane
- Convection cooled--no moving parts; stellar reliability
- Four end lights per lane (one at each corner) that help staff identify alarms faster
- Heavy steel construction for better fit, finish, and durability
- Available with or without a barrier (drop-arm barrier shown)
- Approximately 60" x 40" x 8", for easy site upgrades

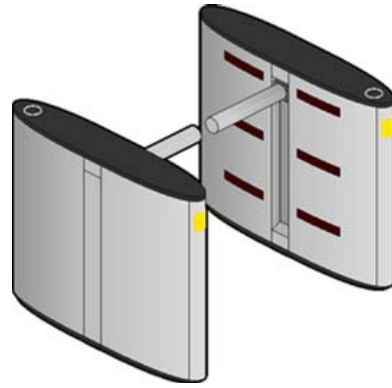
vs.

## Better security at the drop of a hat arm.

New narrow turnstiles with optional drop arm barriers.



Optical turnstile, barrier-upgradeable.



Optical turnstile, drop-arm barriers.

### Overview

Finally, a solution to the barrier dilemma.

Some of our customers have been losing sleep of late. They like the low entry cost of our optical turnstiles, but are tempted by the added security of a barrier system.

Voilà, a solution: the upgradeable optical turnstile. Our new oval turnstile can be bought with drop arm barriers or without. Units without barriers can be easily and quickly upgraded in the field by sliding out the spacer module and sliding in the barrier module (much like changing the CD or floppy drive on a laptop).

This is great for sites where security needs are increasing over time. It even pleases financial gurus, since it helps spread purchase costs over multiple fiscal years.

The compact housing is only 8½" wide, which helps fit more lanes (for more traffic capacity) in a tight space. And it features PathMinder's unique optical detection matrix with 96 sensor beams (competitors typically use six to 18) for real security and a negligible false alarm rate.

Have your cake and eat it too with PathMinder's new oval drop arm barrier optical turnstiles.

### Specifications

- 96 detection beams in a matrix, for tight tailgate detection & negligible false alarm rate
- Available with drop-arm barrier or without;
- units shipped without barrier can be easily upgraded in the field with slide-in module
- Available with top- or side-mounted card reader mounts (top-mounted readers shown);
- accepts almost any third-party proximity, magnetic stripe, or smart card reader
- Offers throughput of 35 people per minute per lane, to eliminate lineups
- Integrates into any access control system
- Corian top, brushed stainless steel sides, and steel internal frame for extreme durability;
- custom materials also available
- Oval housing measures 44" x 8½" x 41" (L x W x H)

## It's in the cards.

With PathMinder, use any card reader, anywhere.

We are often asked if our turnstiles and doorway tailgate sensors work with a given card reader. The answer is, categorically, yes.

Most of our customers use HID or Motorola proximity card readers, either mounted under the Corian top surface of the turnstile, or mounted behind a panel on the side of a turnstile. Some of our customers, though, prefer mounting the readers externally for better visibility and read range, or use a different type of reader entirely. One of our large customers has standardized on a combination smart card insertion reader plus PIN pad (so employees must present their smart card and enter a numeric code to gain entry).

We're happy to integrate any third-party reader, and mount it any way you like.



Top mount, concealed under stainless steel ring



End mount, with insertion reader and PIN pad



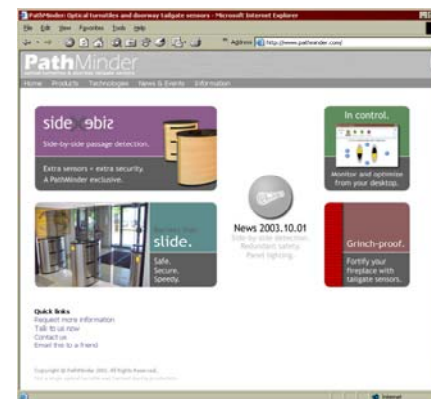
Side mount, concealed behind translucent panel



Side mount, external

## Log on. Learn more.

Visit [pathminder.com](http://pathminder.com) for product info & live web seminars.



### Specifying a job?

Use our updated **generic specifications** for your RFP--just copy & paste.

### Checking up on our claims?

Come see our **videos**. Proof positive.

### Trying to separate the wheat from the chaff?

Attend one of our **web seminars**; we talk about the things you need to look for in a good optical turnstile, and why they're important. Or grab a copy of our **ten-point checklist** and evaluate us against our competitors.

### Looking for design inspiration?

Look through our **custom housing gallery**.